



CREW OF TWO

September 22, 2018



PURPOSE OF THIS PRESENTATION

- ✓ Review the “basics” of Crew of 2
- ✓ Provide suggestions not in the book...
 - ✓ Not everything is...
- ✓ Review some “switches” that confuse people
- ✓ Suggested pregame conference “must haves”



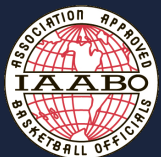
IAABO BASIC FOUNDATION

- **One Rule-One Interpretation**
 - Based on the NFHS Rule & Case books
- **One Mechanic-One Signal**
 - Based on the IAABO Officials Manual & NFHS
- **Mechanics versus Signals**
 - Mechanics are “methods and procedures” designed to put you in the right place
 - Signals provide information



ESSENTIALS OF GOOD MECHANICS

- Know the “officials’ manual”
 - It’s a guide BUT it’s a good one
 - Go where you have to go to officiate the game...
- Terminology:
 - Primary Coverage Area (PCA)
 - Work the Arc, Close Down
 - Ball Side and/or “ABC” positions
 - Trail & Lead “Initial Starting” Positions



SKETCH **YOUR PCA** IN THE FOLLOWING SITUATION-**SEE MAGNET BOARD**

- You are Trail:
 - Ball below FT line, near far sideline
 - Think/Sketch/Talk...with person next to you...agree?

- You are LEAD
 - Same ball location
 - Think/Sketch/Talk...with person next to you...agree?



Visitor

Home

Table

X

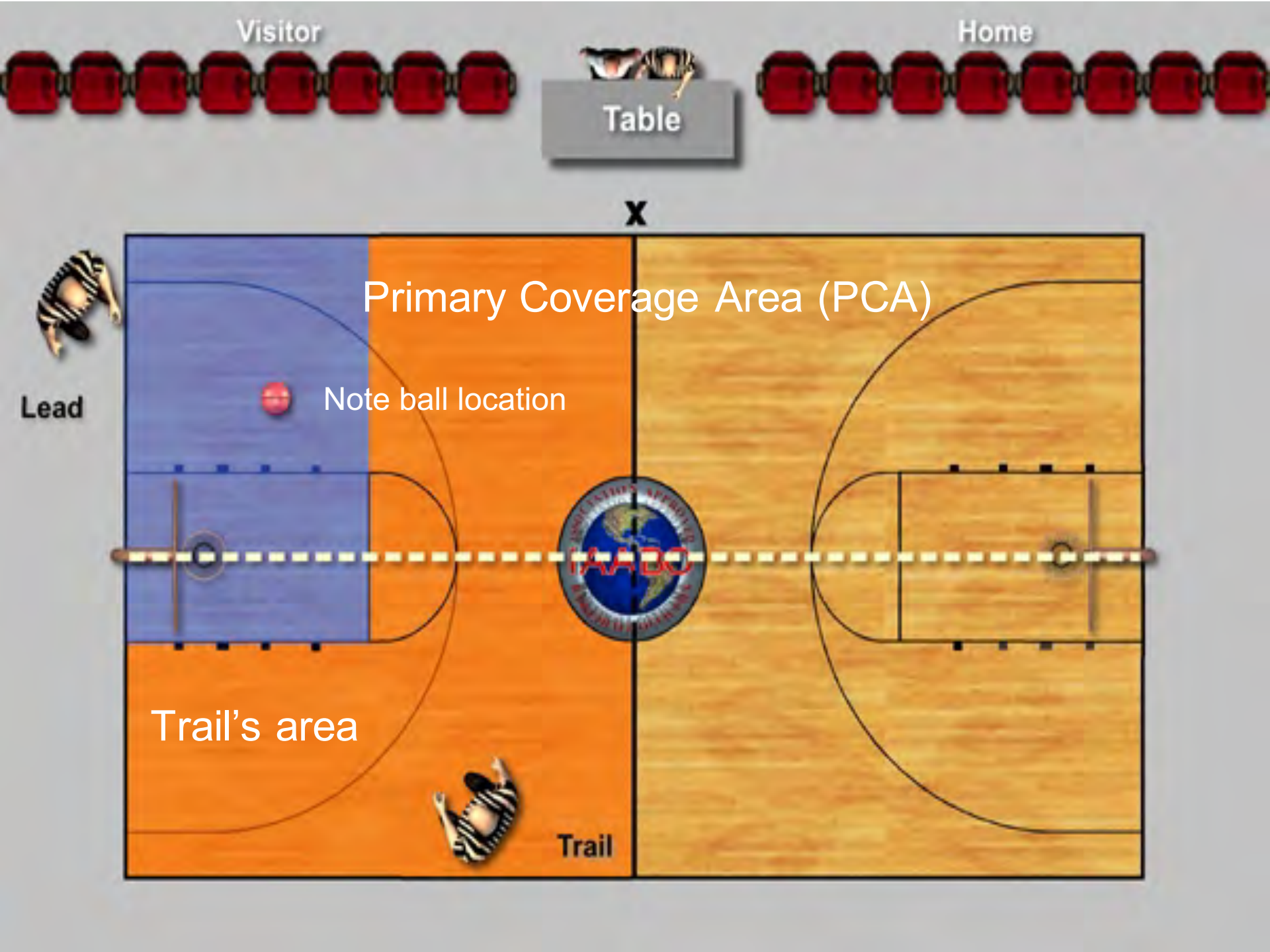
Primary Coverage Area (PCA)

Note ball location

Lead

Trail's area

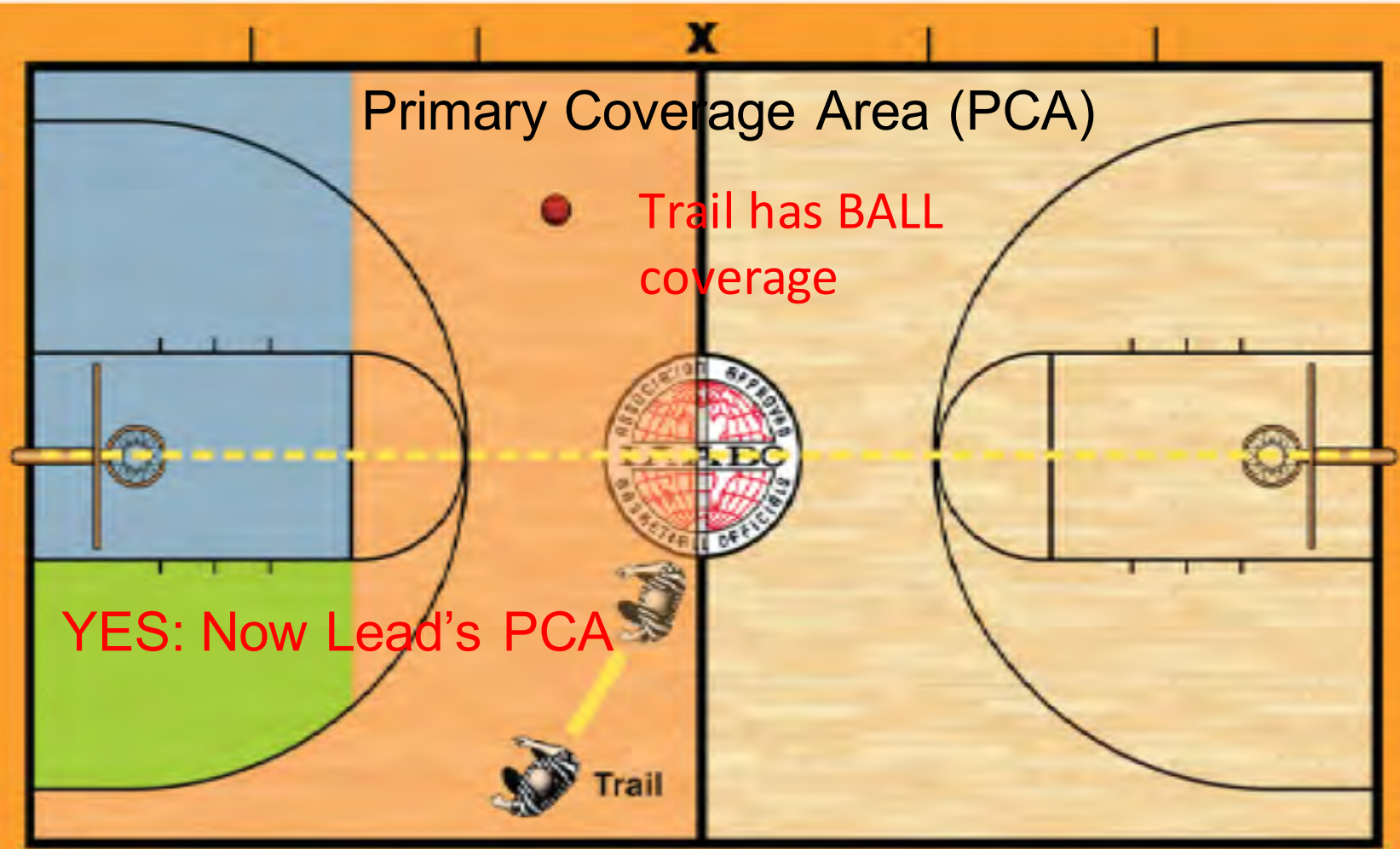
Trail



SKETCH YOUR PCA IN THE FOLLOWING SITUATION-SEE MAGNET BOARD

- You are Trail...:
 - Ball above FT line, near far sideline
 - Think/Sketch/Talk...with person next to you...agree?
- You are LEAD
 - Same ball location
 - Think/Sketch/Talk...with person next to you...agree?
- Did PCA change???





Primary Coverage Area (PCA)

Trail has BALL coverage

YES: Now Lead's PCA

Trail

Visitor

Home

Table

X

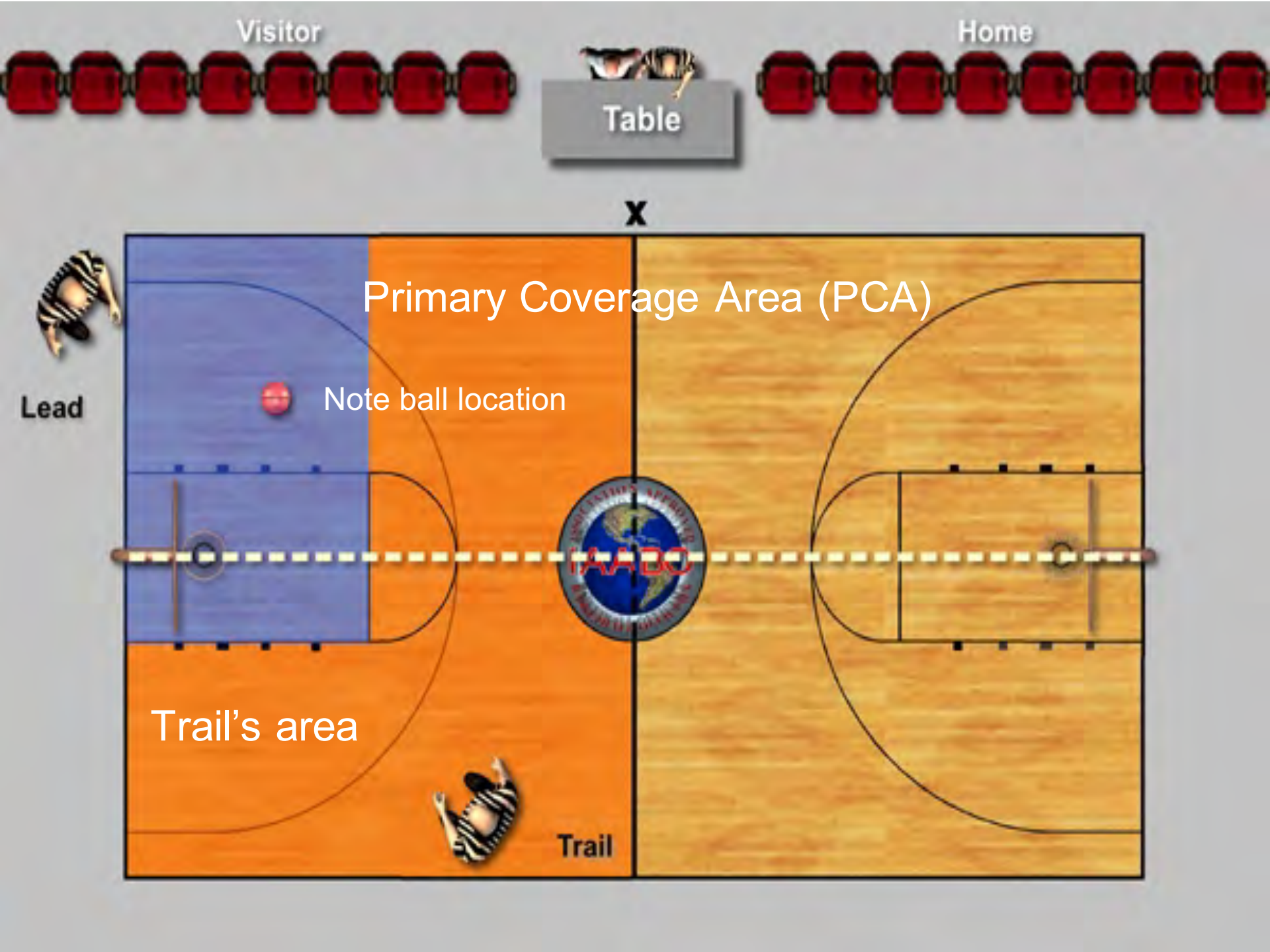
Primary Coverage Area (PCA)

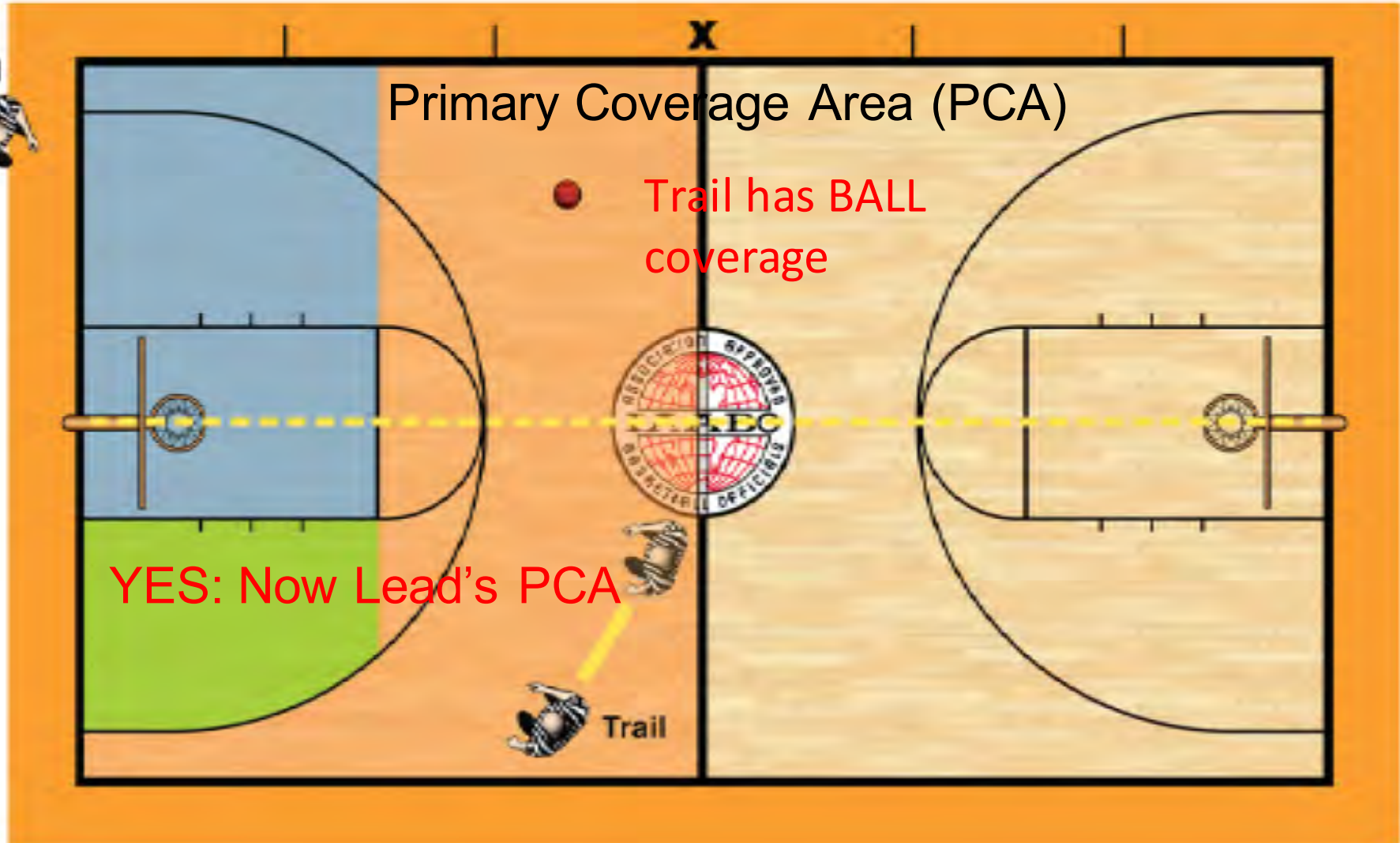
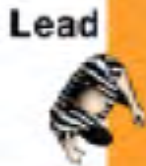
Note ball location

Lead

Trail's area

Trail





Primary Coverage Area (PCA)

Trail has BALL coverage

YES: Now Lead's PCA

Trail

NOTICE PCA ON LAST SLIDE

- **BALL:** Above FT extended on Trail's FAR SIDE...
- **Whose PCA is it?**
- **Who “blows that FAR sideline?”**
- **Who in-bounds the ball?**
- **Discuss...**
- **PCA & Mechanic changed about 5-yrs ago...**



Visitor

Home



Table

Trail



X

Lead

Lead: "Ballside" option
Field of Vision



Lead



Trail



TERMINOLOGY...WHAT, WHEN, WHY?

- ***Close down***

As Trail:

- **What?** Move toward “end line”
- **When?** On shot
- **Why?** Help partner with rebounding

As Lead:

- **What?** Move toward “lane line”
- **When?** As ball approaches “basket line”
- **Why?** Prepared to go “ball side”



TERMINOLOGY...CONTINUED

Working the arc (Trail does this)

- ✓ What? “Mirror” the arc (3-pt line)
- ✓ When? Ball crosses the basket line going AWAY from Trail
- ✓ Why? See thru play...3-pt attempt...credibility



DO THE “A, B, AND C” POSITIONS APPLY TO BOTH CREW OF 2 AND CREW OF 3?

➤ Think and discuss with person next to you.

➤ YES



A & B POSITIONS: WHAT, WHEN, WHY?

What?

- ✓ A = Start position...near 3-pt line
- ✓ B = Near the lane line

When?

- ✓ A = Ball near side line
- ✓ B = Ball goes toward “basket line”
 - ✓ A to B to A...”mirror” ball position

Why?

- ✓ From “B” ...Able to get to C...hard from “A”



C & BALL SIDE: WHAT, WHEN, WHY?

What:

- ✓ C = “Ball side”...other side of the lane

When (this is NOT in the manual):

- ✓ C = Ball “settled” on WING...AND...Post play

Why:

- ✓ See through play...otherwise, you’re guessing
- ✓ Not needed unless “both” are present

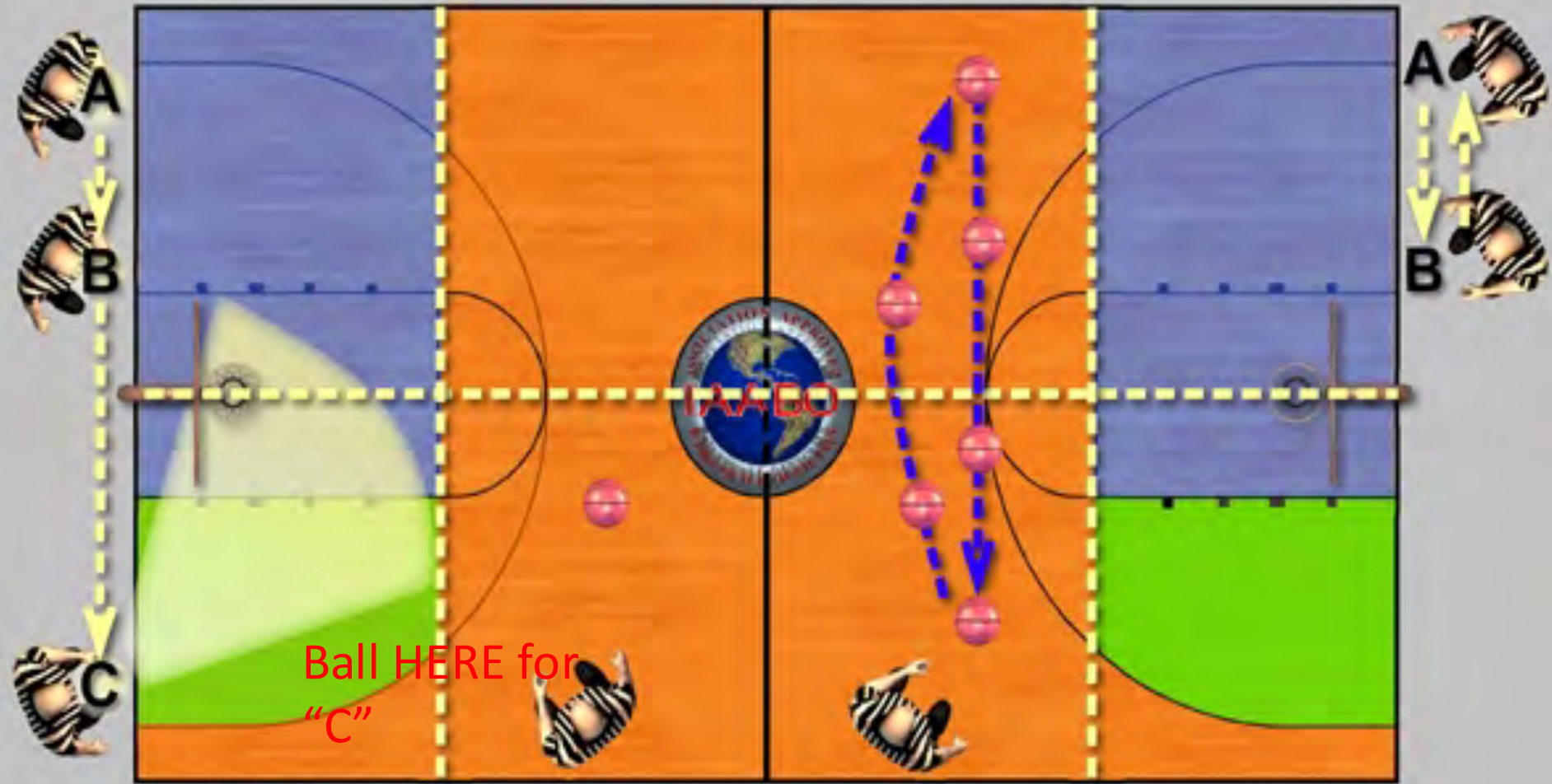


Visitor

Home

Table

X



Ball HERE for "C"

“INITIAL STARTING POSITON” - TRAIL

Transition to Front Court:

- ✓ Trail = 2-3 steps “behind” the ball
- ✓ “Work” the court to get proper angles
- ✓ “Move to improve” = Move feet to improve angle

In Front Court:

- ✓ 28’ = “Hash” mark...1 step above top of key
- ✓ Work the Arc & Close down
- ✓ Help with rebounding...”Your” side of the lane



“INITIAL STARTING POSITION”-NEW LEAD

Transition to Front Court:

- ✓ Read the pressure...Stay and help as needed
- ✓ Don't “backpedal” ... look over inside shoulder
- ✓ See “match-ups”

In Front Court:

- ✓ Get OFF the end line...Deep is Good
- ✓ A, B, & C positions
- ✓ Don't call across the lane... “3 Be's”



WHAT ARE THE “3 BE’S?”

IF calling OUT of your PCA

- ✓ **Be Late:** Give partner 1st shot
- ✓ **Be RIGHT:** 110%
- ✓ **Be Needed:** Will it help the game?
 - ✓ **Felony vs Misdemeanor**



THROW-IN LOCATION

- ✓ DOES matter
- ✓ “Off” official may have best look
- ✓ Get it right

Sketch the Throw-In Chart

- ✓ Compare to person next to you

Should look like this...

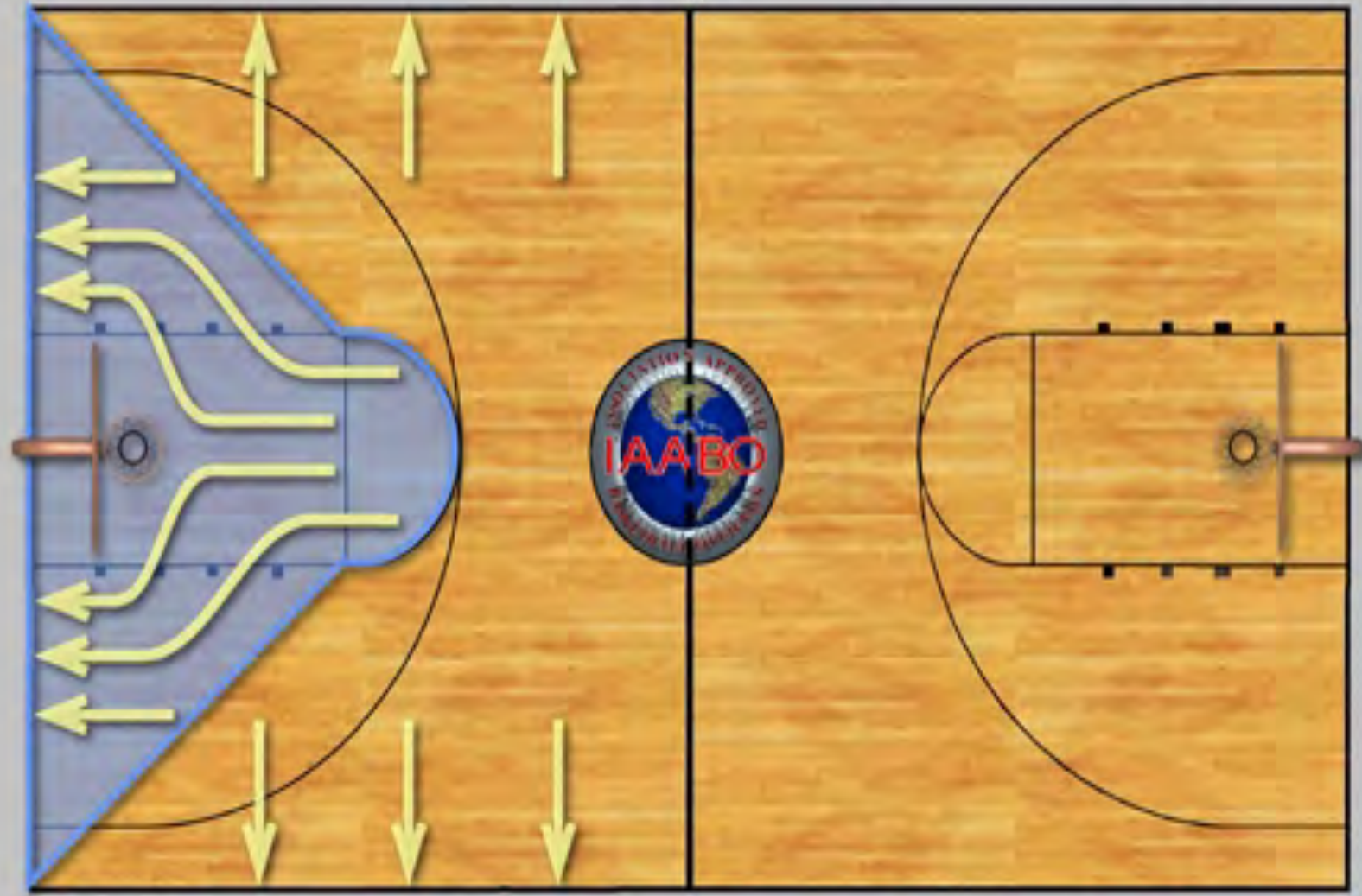


Visitor

Home

Table

X



FOUL RULING---AT THE SPOT

1. Strong whistle...Arm straight up...closed fist
2. Eye contact with partner...
3. Count/cancel goal
4. **Verbalize: Color and number of FOULER**
5. Type of foul
6. **Verbalize: Number of Free Thrower/indicate T-I spot**
7. Do all these before moving toward the table



FOUL REPORTING AREA

- ✓ Get there to report ALL fouls
- ✓ Where is it?

Sketch “reporting area” & Compare with person beside you...

1. Table side of basket line
2. Between “top of keys”
3. Away from table...nothing defined



Visitor

Home

Table

X

Reporting Area

All Table Communications



REPORTING TO THE TABLE

1. Stop & Make Eye Contact (pre-game)
2. Count/cancel goal
3. Color & number of FOULER
 - **Verbal: “twenty-two” NOT “two two”**
 - **Visual: TWO** hands
4. Type of foul
 - **SAME** as at the spot
5. FTs or T-I location
6. Switch...HUSTLE



“SWITCHING” ON FOULS

What is it and why do we do it? Discuss with person next to you.

Change places with partner in order to see the “other” team

Fairness

- **Same official won’t call 3 “post defender” fouls on White 22.**



A FEW “SWITCHES” THAT ARE CONFUSING



SWITCH #1

Tablesider TRAIL rules a “player control” or “team control” foul

WHO GOES WHERE?

Decide...USE Manipulatives

Discuss with person next to you



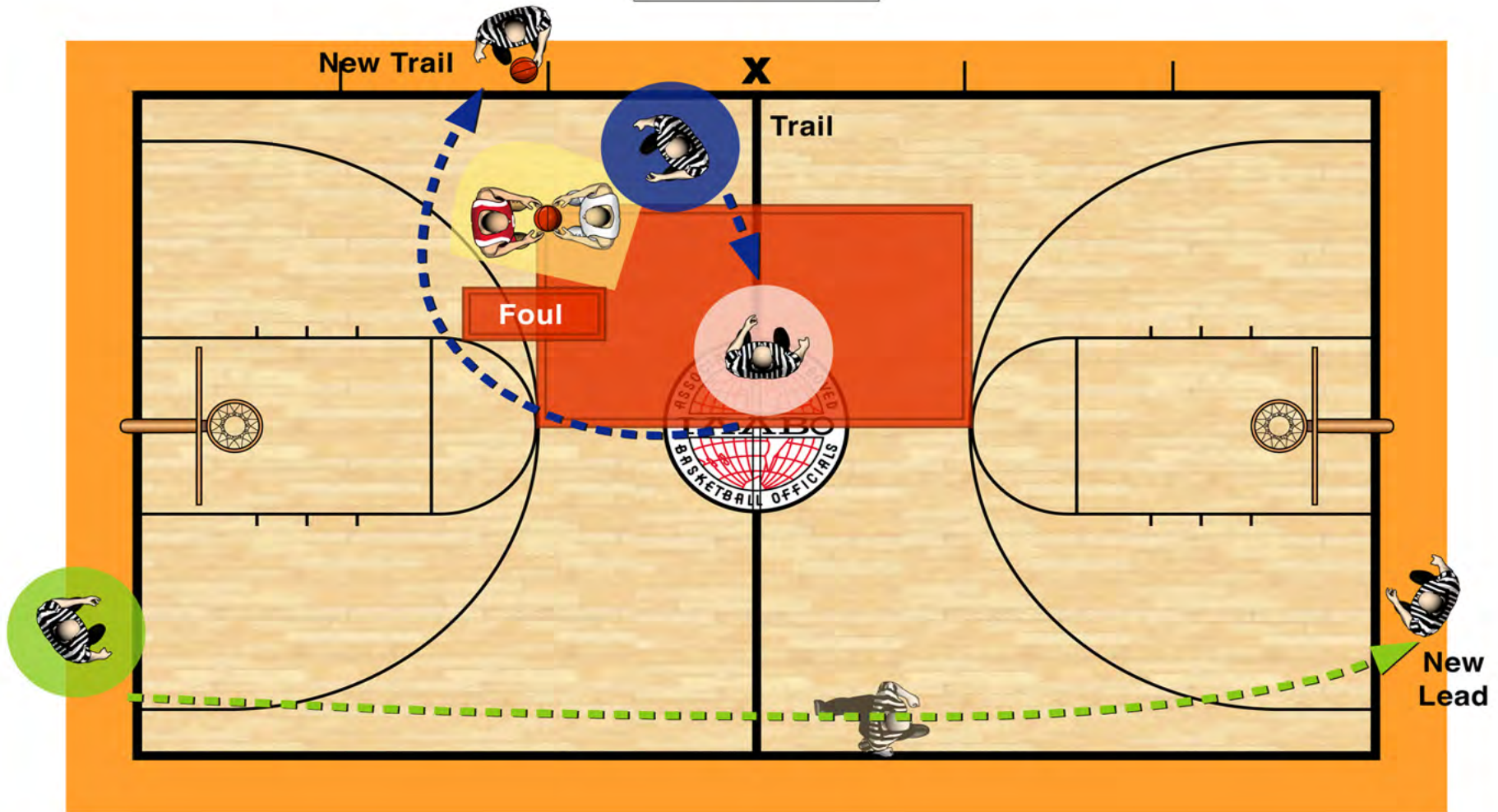
Visitor



Home



Table



Trail makes all throw-ins in backcourt...only for violations

SWITCH #2

Opposite side TRAIL rules “player control” or
“team control” foul

WHO GOES WHERE?

Decide...USE Manipulatives

Discuss with person next to you



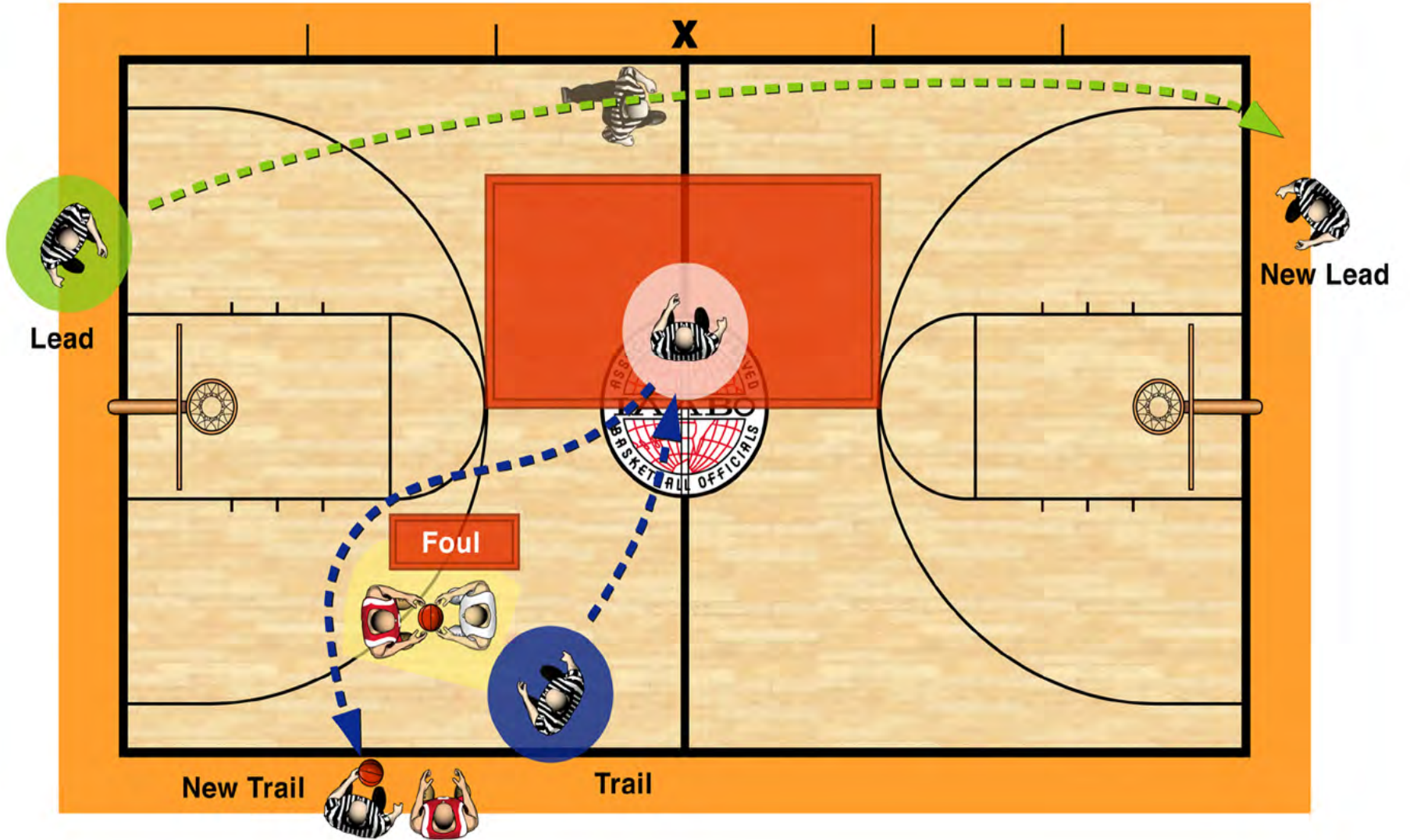
Visitor



Home



Table



SWITCH #3

Opposite side TRAIL rules “hand-checking foul” in the back court in transition (team NOT in bonus)

- Going “Long” ...No FTs

WHO GOES WHERE?

Decide...USE Manipulatives

Discuss with person next to you



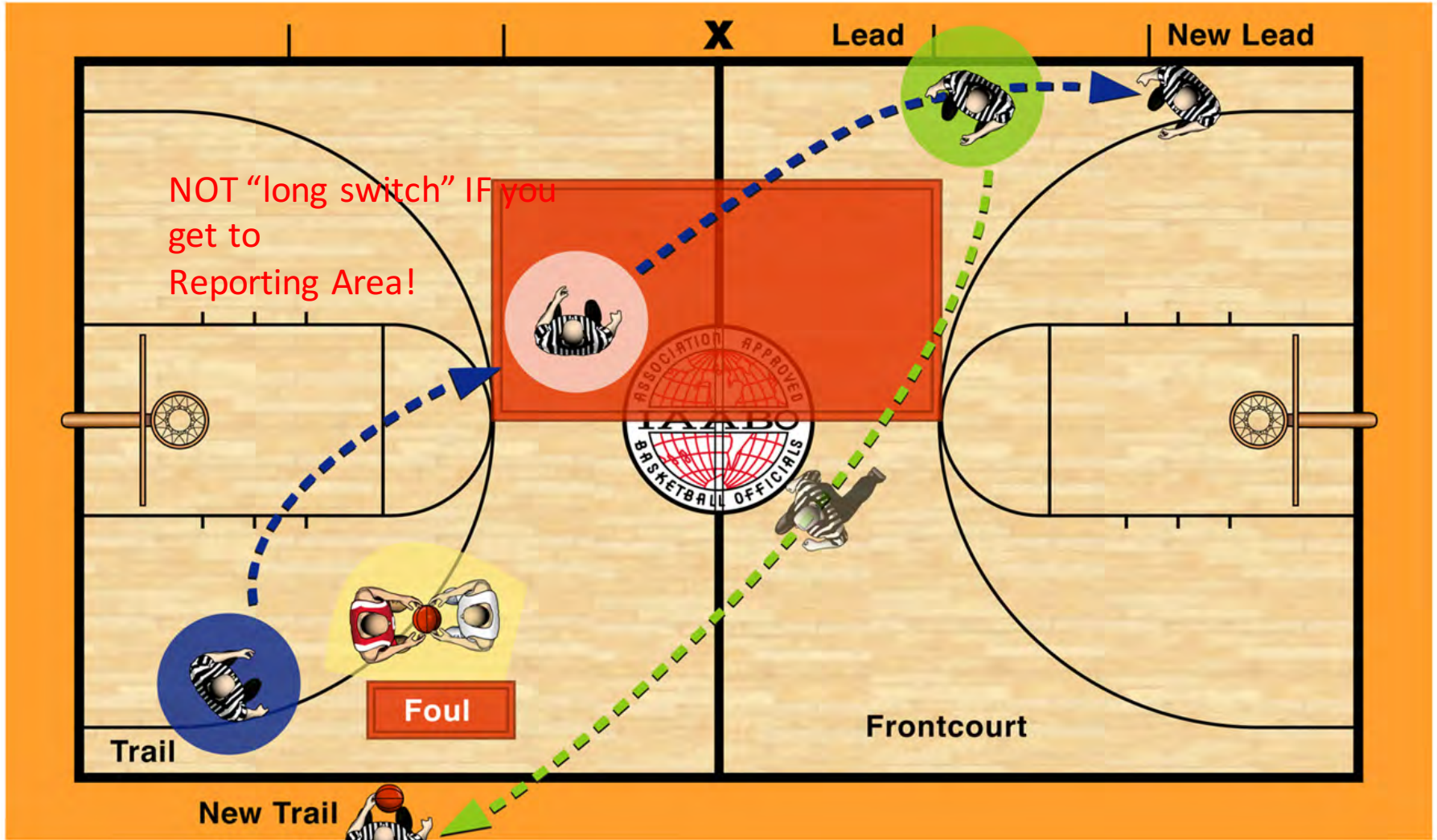
Visitor



Home



Table



MEMORY AID ON “SWITCHING”

When switching, you will **ALWAYS** cross paths with your partner...



FREE THROW POSITIONING

Proper position:

Trail:

- ✓ 1-2 steps above free throw line
- ✓ 1/2 between near sideline and lane line
- ✓ Same as C of 3
- ✓ Close down on shot (Don't close until ball hits)

Lead:

- ✓ Off court, near end line-Not Specific (next slide)



LEAD-FREE THROW POSITIONING

“Back out of the free throw lane taking a position that allows the official to observe the players in the first lane space on the nearer lane line and in the three spaces on the farther lane line.”



FREE THROW COVERAGE

PCA:

- Trail: (**12**)... **1** Free thrower, **2** players on opposite lane line and flight of the ball
- Lead: (**13**)... **1** player on low block on your line, all **3** players on opposite lane line

Reminder Rule:

- Players on lane: **IN on RELEASE**
- Shooter and others: **IN** when ball hits backboard/ring



SHEP'S PREGAME "MUST HAVES"

- PCA & "grey area" ...Above or below FT line? (I'm TRAIL)
 - MY Position = whose PCA
 - IF I'm out on court = Mine
 - If I'm by sideline = Yours
- 3-pt shot
 - Whoever signals has the shooter-Up & to the floor
 - Grey area...Trail primary...only ONE signals
- Drives to basket
 - "Old days-Lead takes all" or "Like C in 3?"



PREGAME “MUST HAVES” ...CONTINUED

➤ “Pass & Crash”

- Ball to your PCA...you have ball
- Ball away from PCA...you have crash

➤ Last second try

- Trail “primarily responsible” (pg. ???)
- **Consider** this: **T if T** in same half of court as shot...otherwise L is primary



SUMMARY

- ✓ PCA awareness is key
- ✓ TRUST your partner
- ✓ 3-Be's...get the play right
- ✓ Pregame essential
- ✓ Work hard...can't get/see all, but can always work hard!
- ✓ Have fun!



**WHAT QUESTIONS OR COMMENTS DO YOU
HAVE?**

Thanks...

ONE more slide...



COLONOSCOPY ???

